

NOTES:

- 1.) ALL INTERCONNECTING PIPING OUTSIDE OF TANKS IS TO BE SUPPLIED AND INSTALLED BY THE INSTALLATION CONTRACTOR.
- 2.) FOUNDATION PAD MATERIALS AND DESIGN IS DETERMINED BY THE PROJECT ENGINEER AFTER SOIL ANALYSIS IS COMPLETED
- 3.) MATERIALS FOR ANCHORING OF TANK TO THE FOUNDATION PAD IS TO BE SUPPLIED BY OTHERS
- 4.) INCOMING ELECTRICAL POWER AND CONNECTION TO THE CONTROL PANEL IS BY THE ELECTRICAL CONTRACTOR.
- 5.) ENGINEER/CONTRACTOR TO VERIFY ELEVATIONS, ORIENTATION OF PIPING LOCATIONS AND CONNECTIONS AND GRADE ELEVATION.
- 6.) TANKS TO HAVE FIELD SPLICES ON THE X-X AND Y-Y AXIS AND REQUIRE FIELD WELDING DUE TO SHIPPING LIMITATIONS. THE HANDRAILS, LADDERS, BLOWERS & CONTROL PANEL ARE ALSO FIELD MOUNTED AND REQUIRE FIELD ASSEMBLY BY BOLTING OR WELDING.

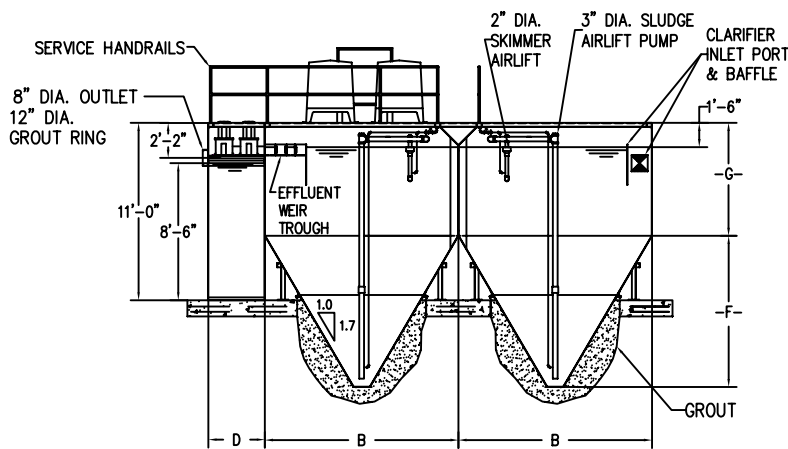
SEE DWG. P09B-ESC FOR SECTION VIEWS B-B & C-C

PLANT MODEL NUMBER	DESIGN FLOW GPD	AERATION TANK VOLUME	CLARIFIER TANK VOLUME	SLUDGE TANK VOLUME	CHLORINE CONTACT TANK-VOL.	FLOW EQ. TANK VOLUME	FLOW EQ. BLOWER		MAIN AIR BLOWER	
							HP	CFM	HP	CFM
OPTIONAL EQUIPMENT/ MATERIALS/TANKAGE										
FULL TANK GRATING			ANCHOR BRK'TS		COMMUNUTOR					U V DISINFECTION
BAR TYPE GRATING			MAGNESIUM ANODES		GRINDER PUMPS					
WELDED HANDRAILS			SCH.40 STL. DROP PIPES		PUMP GUIDE RAILS					REMOTE MOUNTED BLOWERS & CONTROLS
BOLTED HANDRAILS			GALVANIZED PIPING		EPOXY PAINT SYSTEM					DOSING TANK
HANDRAIL TOEPLATES			STN. STL. DIFFUSERS		DE-CHLORINATION					TERTIARY FILTERS
LADDERS/ STAIRWAYS			FROTH SPRAY SYSTEM		GAS CHLORINATION					

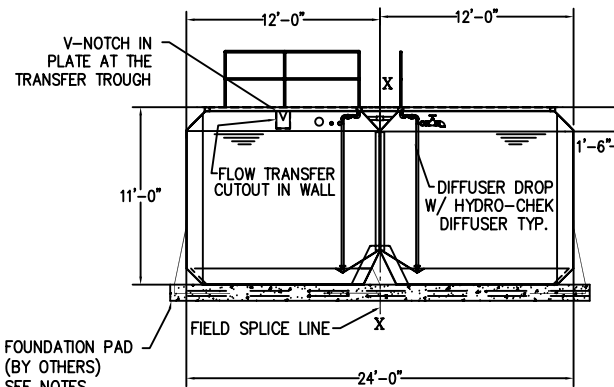
REV.	DATE	DESCRIPTION	APPROV.
3-28-13		UPDATED BLOWERS AND DROP PIPES	JM
12-12-12		UPDATED EQUALIZATION PUMP PIPING & GRATING	JM

**PCS** Pollution Control Systems, Inc.  
 5827 Happy Hollow Rd., Suite 1B  
 Milford, Ohio 45150  
 (513) 831-1165  
 E-mail PolConSys@aol.com

PREFABRICATED PACKAGE TREATMENT PLANT			
SCALE:	NTS	QUOTE NO.	PROJECT NO.
DRAWN BY:	JJM	DATE:	6-25-98
CHECKED BY:	JJM	DATE:	6-25-98
SHEET	1 OF 2	DRAWING NO.	P09A-ESC



**SECTION B-B**




**SECTION C-C**

**NOTES:**

- 1.) ALL INTERCONNECTING PIPING OUTSIDE OF TANKS IS TO BE SUPPLIED AND INSTALLED BY THE INSTALLATION CONTRACTOR.
- 2.) FOUNDATION PAD MATERIALS AND DESIGN IS DETERMINED BY THE PROJECT ENGINEER AFTER SOIL ANALYSIS IS COMPLETED
- 3.) MATERIALS FOR ANCHORING OF TANK TO THE FOUNDATION PAD IS TO BE SUPPLIED BY OTHERS
- 4.) INCOMING ELECTRICAL POWER AND CONNECTION TO THE THE CONTROL PANEL IS BY THE ELECTRICAL CONTRACTOR.
- 5.) ENGINEER/CONTRACTOR TO VERIFY ELEVATIONS, ORIENTATION OF PIPING LOCATIONS AND CONNECTIONS AND GRADE ELEVATION.
- 6.) TANKAGE TO HAVE FIELD SPLICES ON THE X-X , Y-Y AND Z-Z AXIS AND WILL REQUIRE FIELD WELDING AT SPLICE LINES DUE TO SHIPPING LIMITATIONS. HANDRAILS, LADDERS AND FLOW DIVIDER BOX ARE ALSO FIELD MOUNTED REQUIRING FIELD WELDING.

**SEE DWG. P09A-ESC FOR PLAN VIEW & SECTION VIEW A-A**

 <b>Pollution Control Systems, Inc.</b> 5827 Happy Hollow Rd., Suite 1B Milford, Ohio 45150 (513) 831-1165 E-mail PolConSys@aol.com	<b>PREFABRICATED PACKAGE TREATMENT PLANT</b>			
	SCALE: NTS	QUOTE NO.	PROJECT NO.	
	DRAWN BY: JJM	DATE: 7-6-98	SHEET	DRAWING NO.
CHECKED BY: JJM	DATE: 7-6-98	2 OF 2	P09B-ESC	

REV.	DATE	DESCRIPTION	APPROV.
△	12-12-12	UPDATED EQUALIZATION PUMP PIPING, DROP PIPES & GRATING	JJM

THIS DRAWING CONTAINS INFORMATION THAT IS PROPRIETARY TO POLLUTION CONTROL SYSTEMS AND IS NOT TO BE USED WITHOUT PERMISSION OF POLLUTION CONTROL SYSTEMS